



ALUMINUM PERGOLA

SUN & RAIN PROTECTION





Table of Contents

Comfort, Innovation, Style	04	Louvered Luxury Living	42
Our mission and who we are	06	Nature's Outdoor Oasis	44
Patented technologies	08	House Extension	46
All Advantages	09	Backyard Complement	48
Custom Size	10	Poolside Serenity	50
KIT 10' x 12'	12	Cantilevered Outdoor Kitchen	52
The Strongest Design	14	Perfect Pergola Lights	54
Commercial	16	Rooftop Relaxation Station	56
Innovative Louvered Roof	18	Winter Wonderland Swimspa	58
Accessories	20	Entertainment Escape	60
ZIP Screens	22	Keg Steakhouse Outdoor Dining Experience	62
LED Lights	24	Vettä Nordic Spa Project	64
Heaters	26	Henry of Pelham Project	66
Aluminum Wall	28	Rosewood Winery Project	68
Manual Operation	30	Outdoor Gameroom Pergola	70
Outdoor Kitchen Cover	32	Poolside Pergola + Cabana	72
Watertight Roof & Snow Load	34	L-Shape Pergola Swim Spa	74
Bungalow Pergola Project	21		
Warranty	38		
White Lakeside Retreat	40		

Comfort, Innovation, Style

An aluminum louvered pergola is the perfect blend of innovation, design, and functionality.

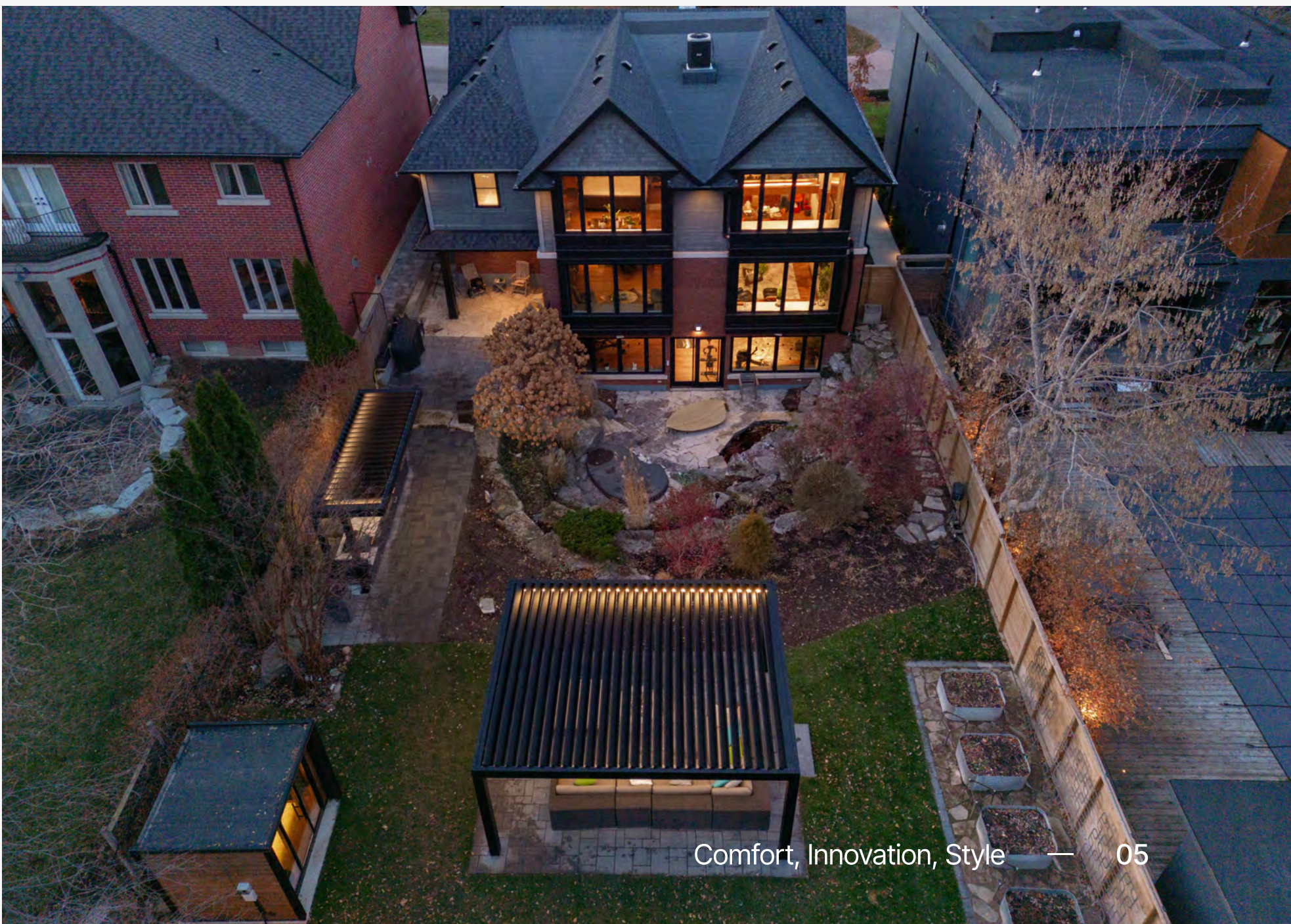


Made from high-quality, durable materials, it's engineered to withstand the elements while adding a stylish and custom touch to any outdoor space.



With its adjustable louvered roof, you can enjoy your outdoor area no matter the weather, providing shade when it's hot or shelter when it's rainy. As the manufacturer of this unique, patented product, we take pride in offering a pergola that not only enhances your outdoor living but also solves the problem of unpredictable weather.

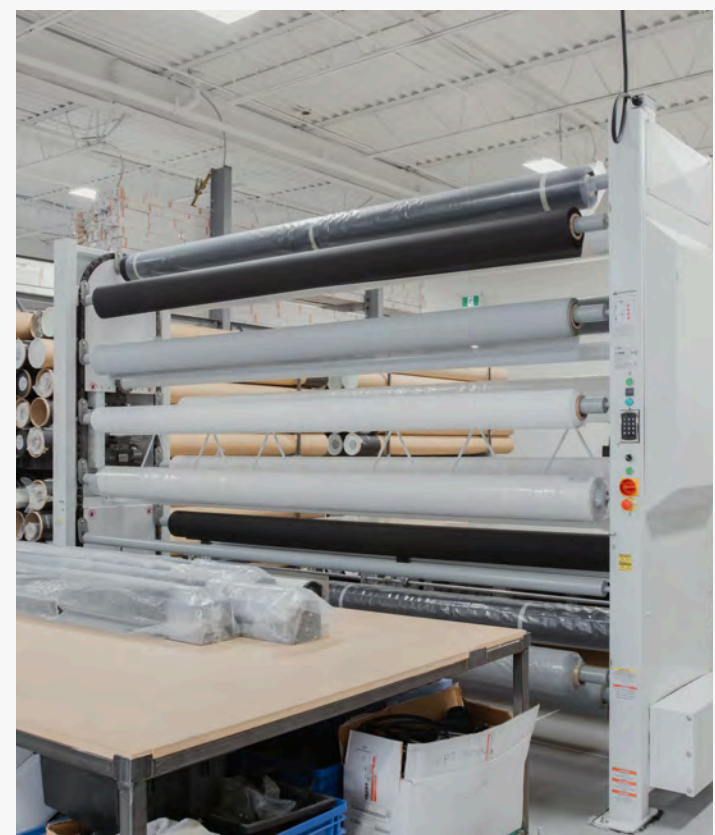
It's more than just a pergola, it's an evolution in outdoor comfort and design.



Our mission and who we are

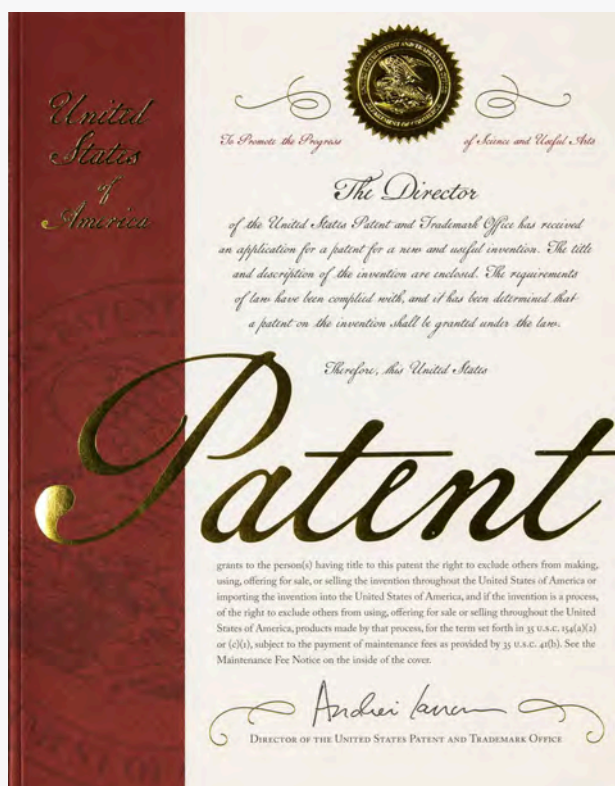


Aluminum Pergola, located in Southern Ontario with dealers across North America, is a top manufacturer of louvered pergolas. With over 10 years of experience in landscaping, we work with homeowners and businesses to create stylish and functional outdoor structures. Our louvered pergolas provide protection from the elements while allowing easy control of airflow, sun exposure, and rain.



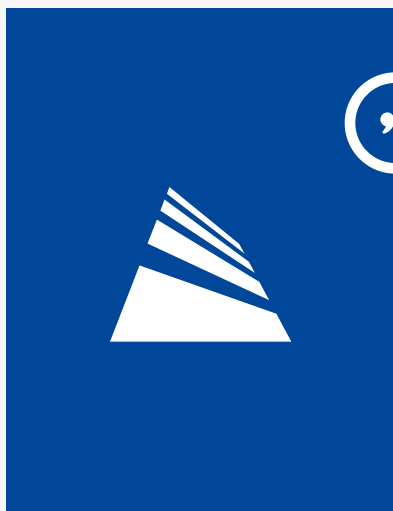
Patented technologies

We are proud to have obtained a patented technology that sets us apart in the pergola industry. As one of the few companies to hold this patent, it reflects our commitment to innovation and excellence. This advanced technology enhances the functionality and durability of our louvered pergolas, ensuring superior performance and design. As one of the few companies that has obtained a patent for both Canada and USA allows us to offer unique, cutting-edge solutions that elevate the outdoor living experience for our customers.



USA Patented Technology

Our innovative product is protected by U.S. Patent, ensuring its unique design and functionality are legally safeguarded which is exclusive to our brand.



We take pride in the fact that our pergolas are protected by a patent. This reflects our commitment to innovation, quality, and uniqueness.

CEO of Aluminum Pergola

All Advantages

Customization

Design structures with millimeter precision, tailored perfectly for your unique space

Durability

Built with high-quality materials, ensuring they remain strong and stable, even through snowfall or hurricanes

Modern design

With a focus on modern aesthetics, our designs seamlessly integrate into any space, reflecting the latest trends to enhance your outdoor area

Patented technology

Protected under patent law, proof that you're getting top-quality product combined with one-off innovation you won't find anywhere else.



Custom Size



Made from high grade extruded aluminum



Envision your outdoor living space easily adapting to the ever changing climate of Canadian seasons. Have the flexibility of creating a more comfortable, relaxing, functional space with the turn of the louvers. Our aluminum louvered pergola will add value to your home or business, along with providing you with a unique freestanding or attached structure that will give you a multi-purpose space to host your friends and family or clients in a variety of weather conditions.



KIT 10' x 12'

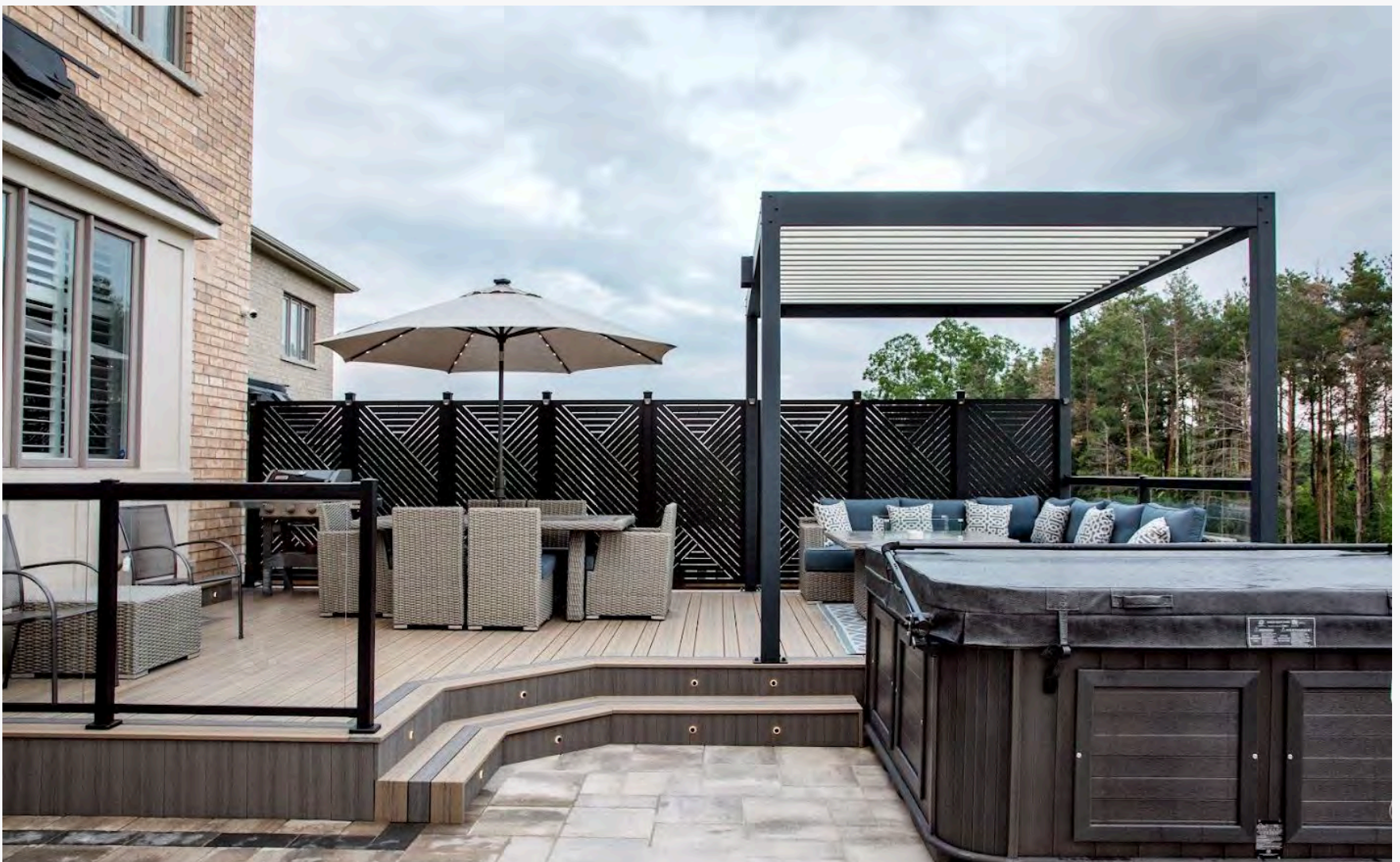
In addition to customizable sizing, Aluminum Pergola offers a fixed and ready to assemble 10' by 12' option. Distinguished by its smaller frame size, this KIT features the same water and sun protection as our custom pergolas along with optional side screens, LED lighting and privacy walls.



Frame Umbra Grey

Louvers Pure White

Zip Screens White



The Strongest Design

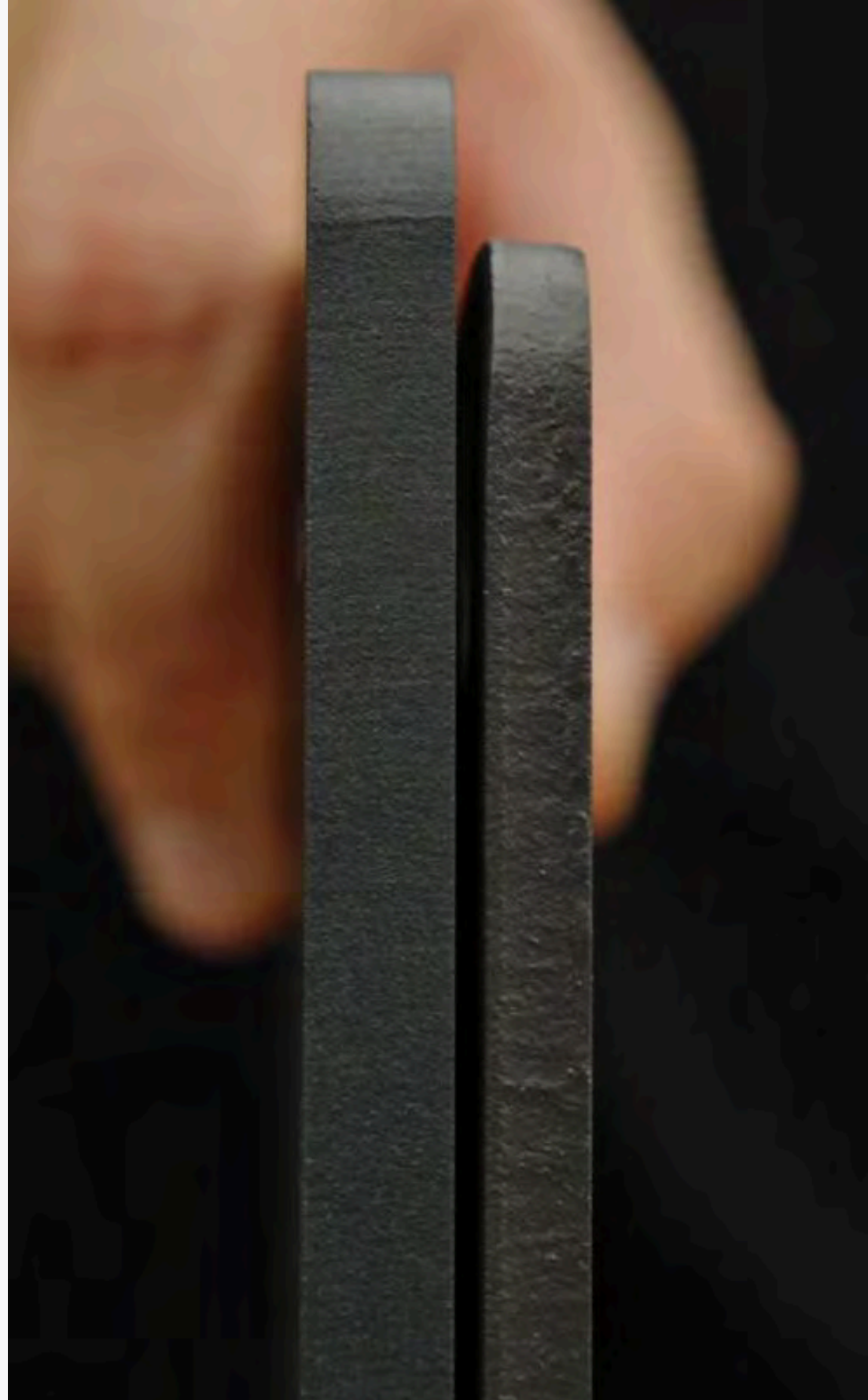
Our pergolas are built with premium-quality aluminum extrusions, designed to be the thickest and most durable in the industry. We focus on providing materials that are resistant to rust and mechanical damage, ensuring a long-lasting, low-maintenance outdoor experience.

Colours

Jet Black RAL 9005

Umbra Grey RAL 7002

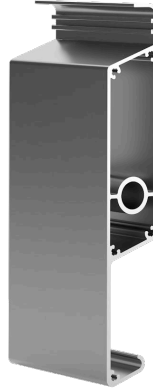
Pure White RAL 9010





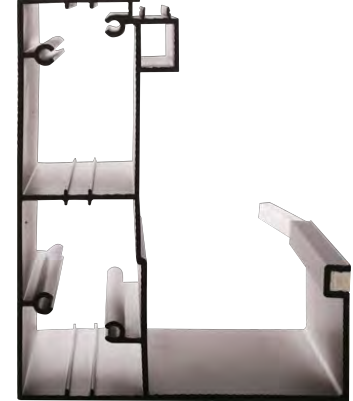
Post Profile

Most durable post profile customized to your application.



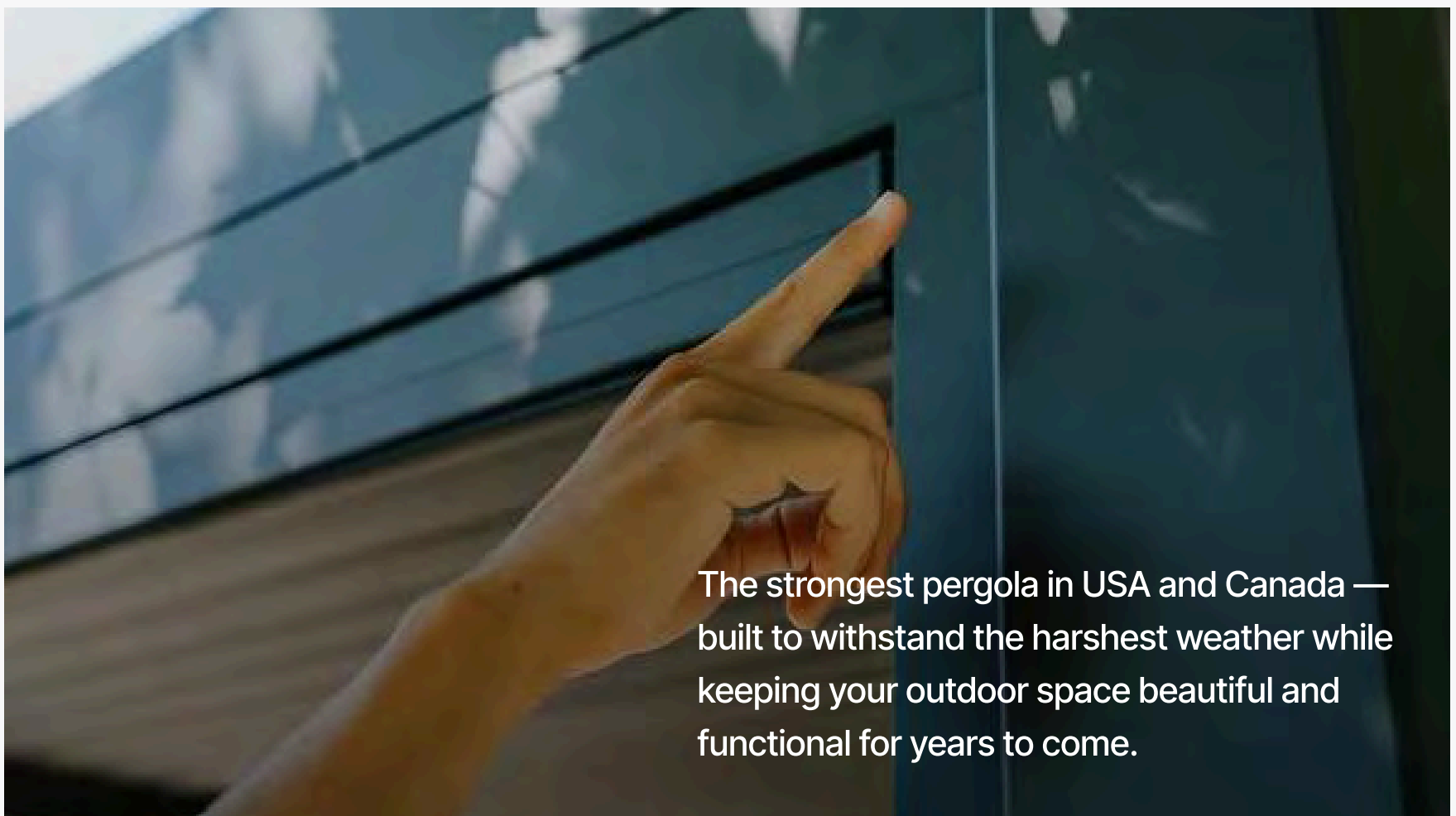
Louvers

Strongest louvers on the market engineered for snow loads.



Beam profile with gutter system

Extruded beam and integrated gutters for water management.



The strongest pergola in USA and Canada — built to withstand the harshest weather while keeping your outdoor space beautiful and functional for years to come.

Commercial



More Comfort

Patented technology that provides unrelenting protection to guests from sun and rain, our louvered roof transforms outdoor areas into functional and engaging spaces.



More Customers

Adding a pergola to your commercial space offers numerous benefits, including enhanced outdoor seating, increased capacity, and year-round usability allowing guests to stay longer.

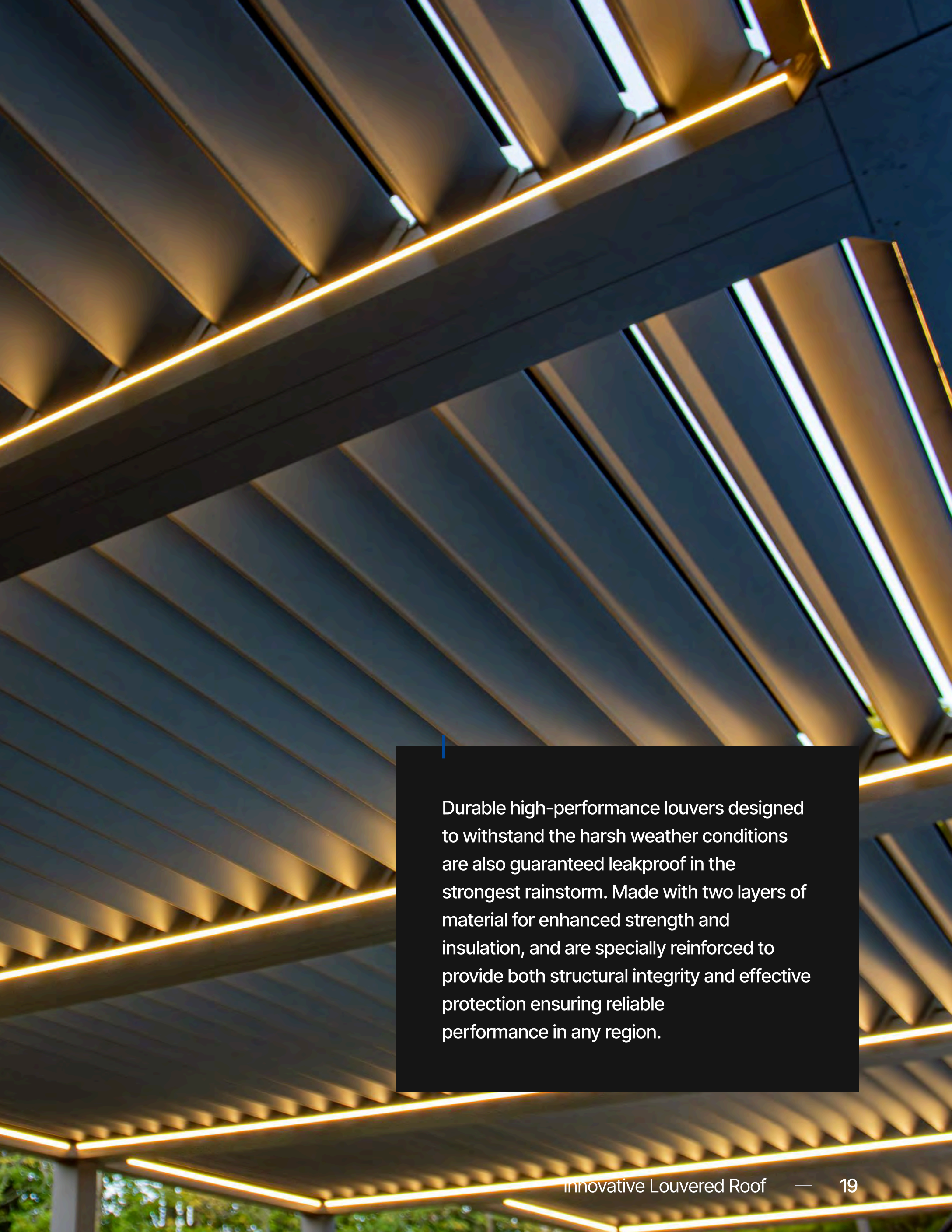


More Revenue

Seamlessly integrating into existing architecture, and improving ambiance and functionality of any space, these modern additions will boost foot traffic and revenue that keeps guests coming back.



Innovative Louvered Roof



Durable high-performance louvers designed to withstand the harsh weather conditions are also guaranteed leakproof in the strongest rainstorm. Made with two layers of material for enhanced strength and insulation, and are specially reinforced to provide both structural integrity and effective protection ensuring reliable performance in any region.

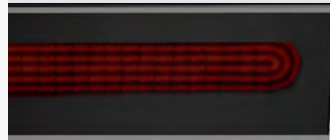
Accessories



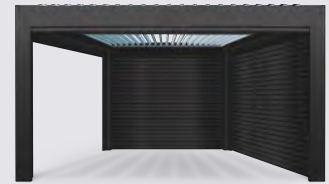
Zip Screens



LED Lights



Heaters



Aluminium Wall

Adding accessories like ZIP screens, LED lights, heaters and aluminum walls enhances your pergola's functionality and comfort. ZIP screens provide privacy and insect protection, LED lights set the mood, heaters allow for year-round use, and aluminum walls offer durability and a modern aesthetic. Together, they create a versatile and enjoyable outdoor space.





Zip Screen

Heater

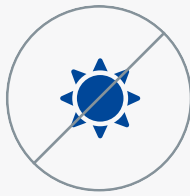
LED Lights

Aluminum Wall

ZIP Screens



Wind
Protection



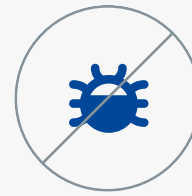
Sun
Protection



Rain
Protection



Snow
Protection



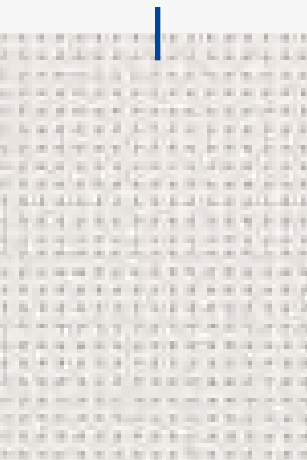
Insect
Protection



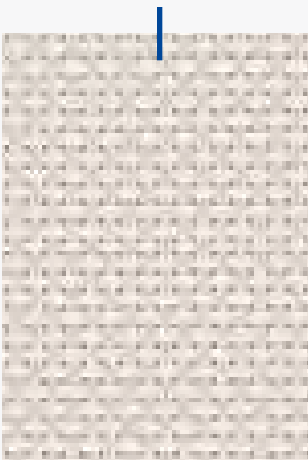
- + Provides additional sun and rain protection, bug deterrence, and privacy.
- + Utilizes Recasens fabric as a partner proudly chosen for their expertise in manufacturing a PCV coated nylon screen known for its beauty and durability.
- + Available in an openness factor of 10% that produces a tighter weave of fabric that reduces passing light yet maintains privacy and visibility.



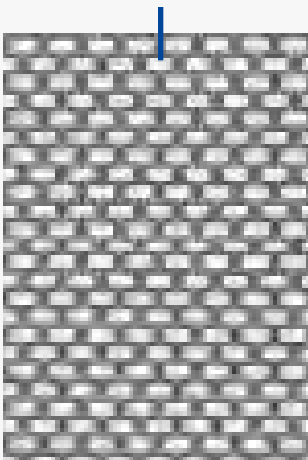
Zip Screens Colours



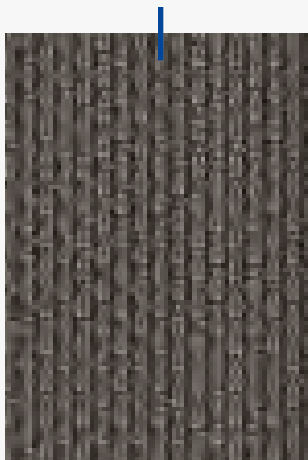
White



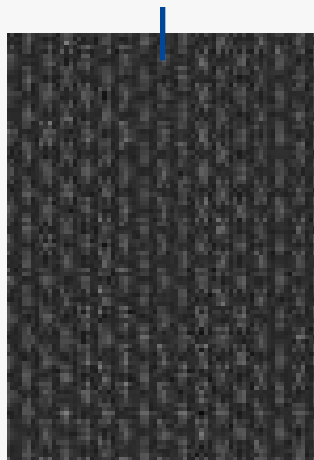
Beige



Grey



Bronze



Black

LED Lights

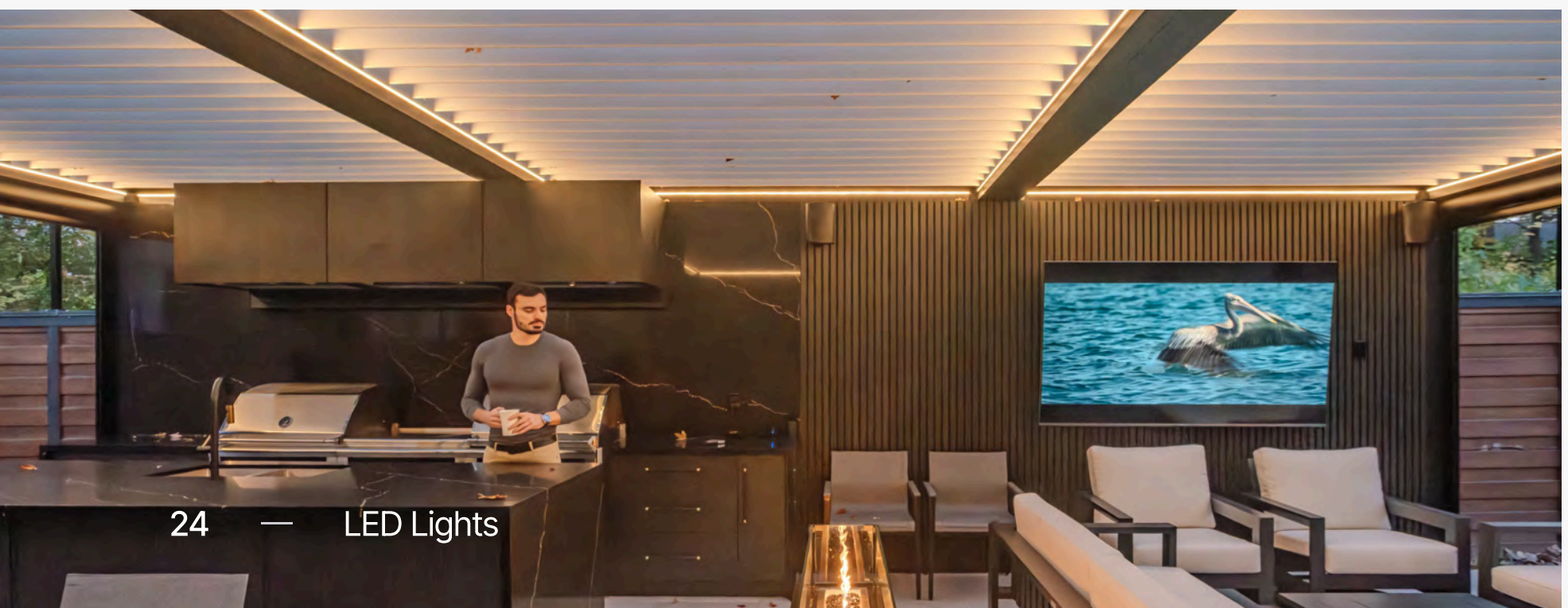
WARM WHITE 3200k

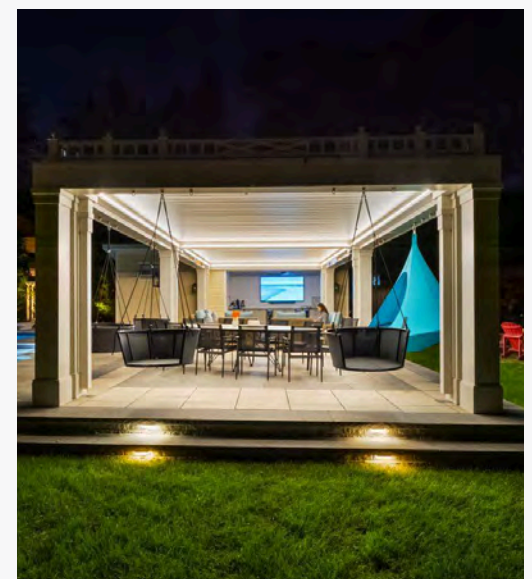
A warm white lighting pergola creates a cozy, inviting atmosphere, ideal for relaxed evenings and intimate gatherings in your outdoor living area.



Multi Colour (RGB)

To create the atmosphere and mood of a party, we recommend using multi-colored LED lighting for pergolas





Wall Mounted Heaters



Wall mounted outdoor heaters are recognized all over the world for superior design and are installed to deliver outdoor heating that provides comfort in cooler weather. Available in gas or electric, there's an option for every environment.

Freestanding Heaters

Patio heaters offering ultimate flexibility, freestanding heaters can be moved anywhere warmth is needed. They come in various sizes and heating capacities, making them suitable for any room. Look for features like adjustable thermostats and oscillation for even heat distribution.



Solid Aluminum Wall

You can protect yourself with an aluminum wall that provides full enclosure and privacy, offering a sleek modern look with complete protection from the elements, and the neighbours. It shields against wind, rain, and debris, creating a more sheltered and secure environment while enhancing the overall durability and insulation of the space.

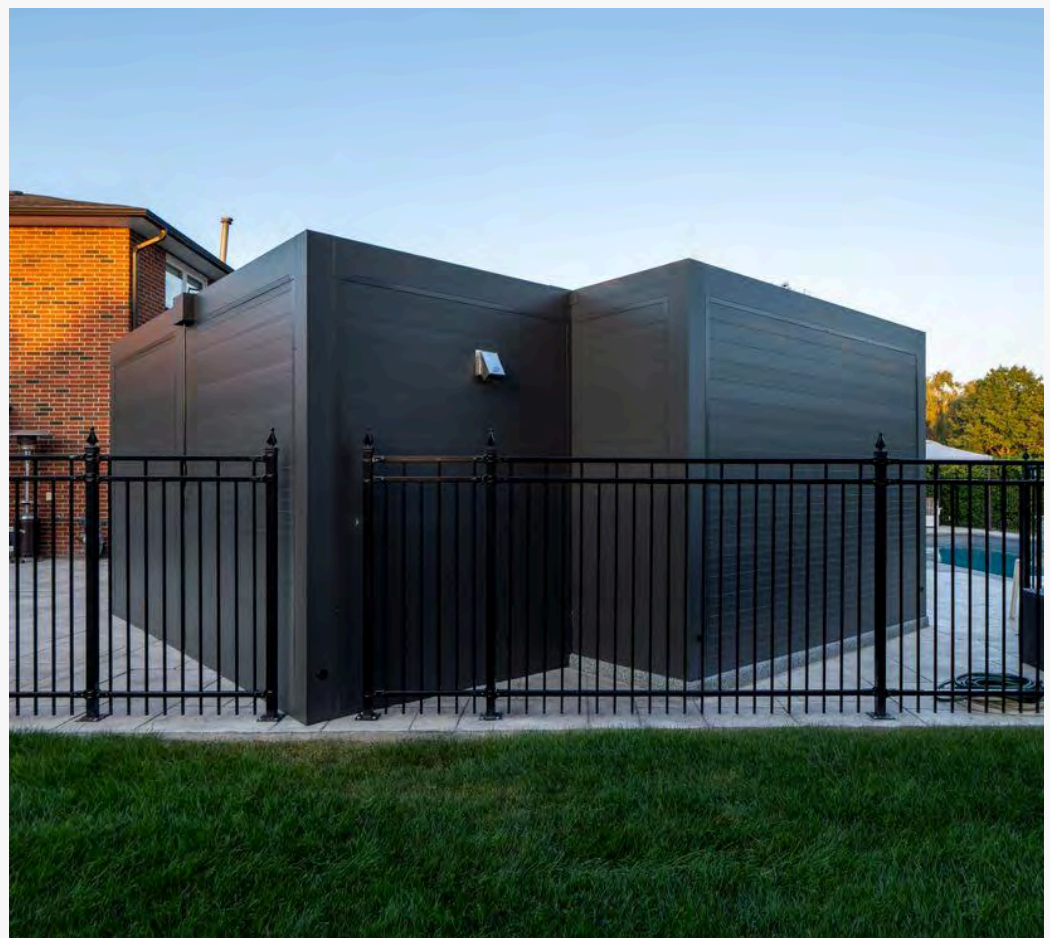


Colours

Jet Black

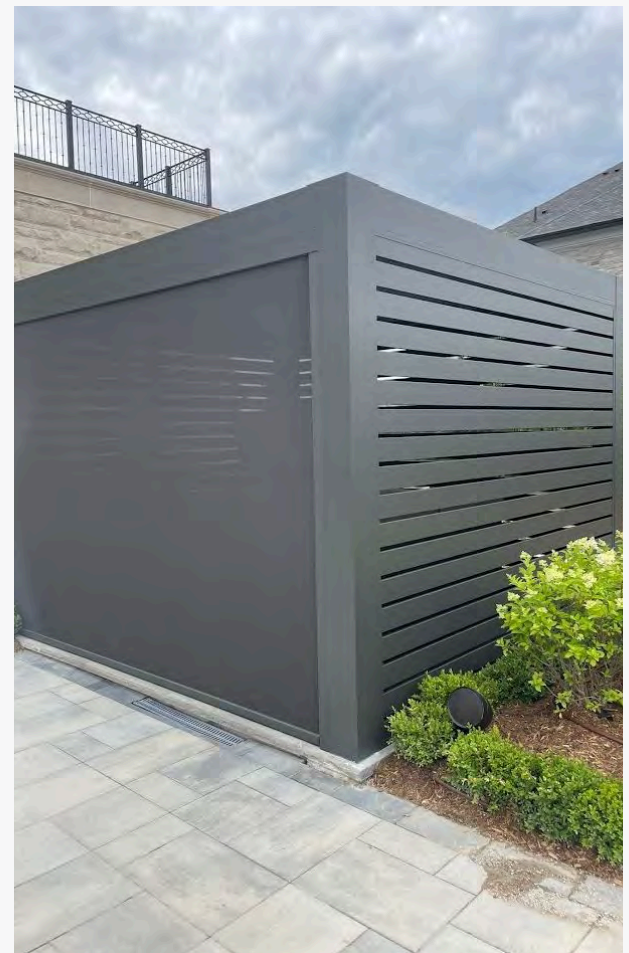
Umbra Grey

Pure White

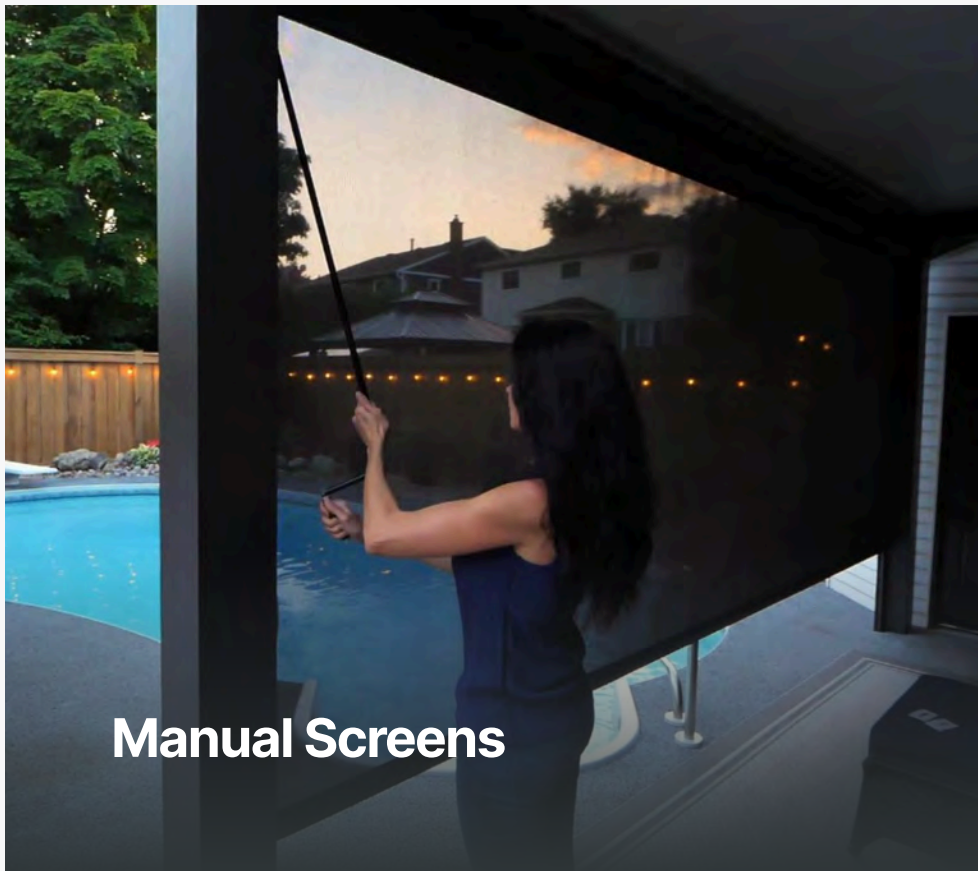


Aluminum Wall with Gaps

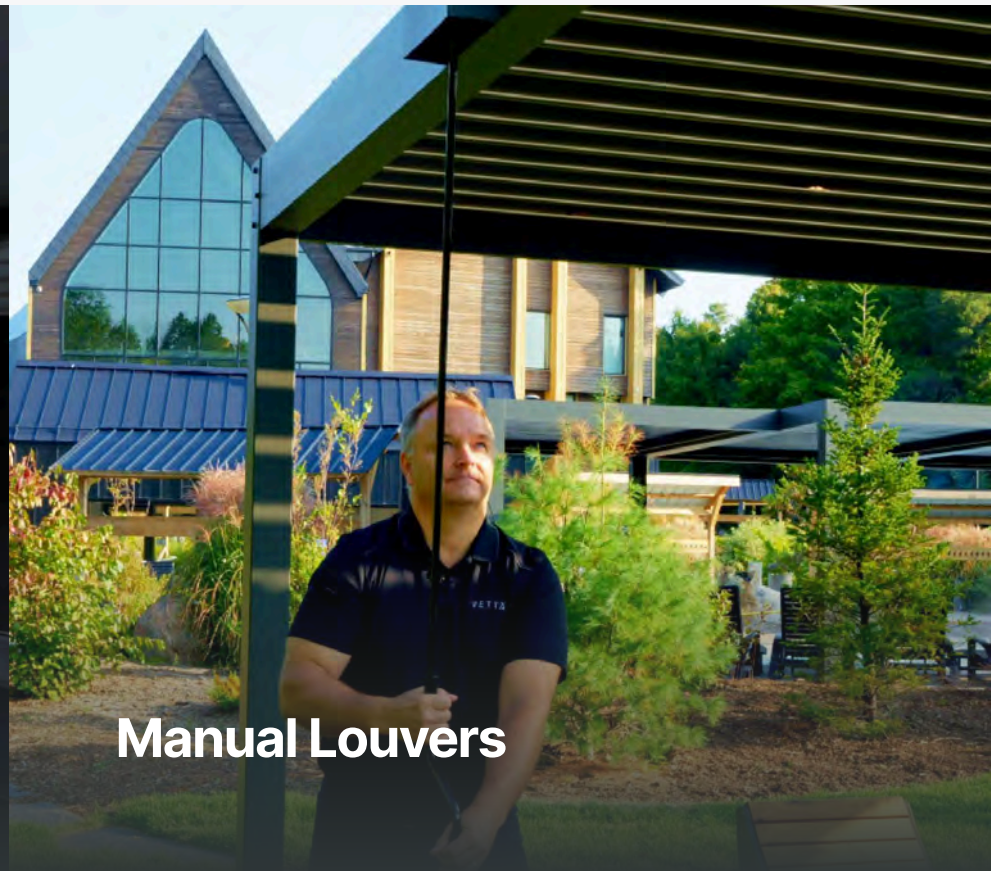
Our aluminum wall with gaps offers a balance between privacy and airflow. The gaps allow for ventilation and light while still providing a degree of enclosure, making it a great option for those seeking a modern, semi-enclosed space, while maintaining an open and airy feel.



Manual Operation



Manual Screens

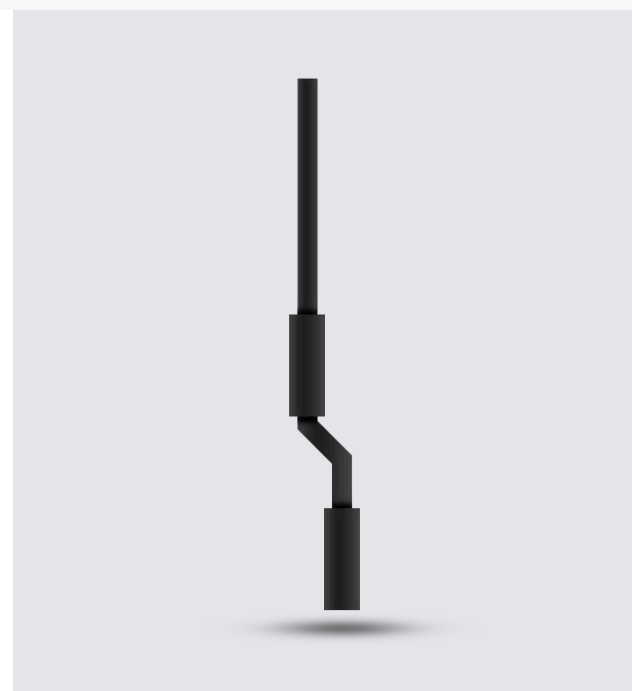


Manual Louvers

Our pergolas can be operated manually by hand crank to easily adjust louvers, or motorized, offering convenience with remote or smart control. Manual might be simpler, while motorized options provide ease of use, making automation for larger structures easy.

Quick and easy to use gear box operation controlled by handle crank.

- + Included in standard package
- + Warranty: **5 years**



Motorized Operation



Motorized Screens



Motorized Louvers

Via Wi-Fi

- + Daisy
- + Buld-in TV ZOON

works with the
Google Assistant

JUST ASK
alexa



Home automation:

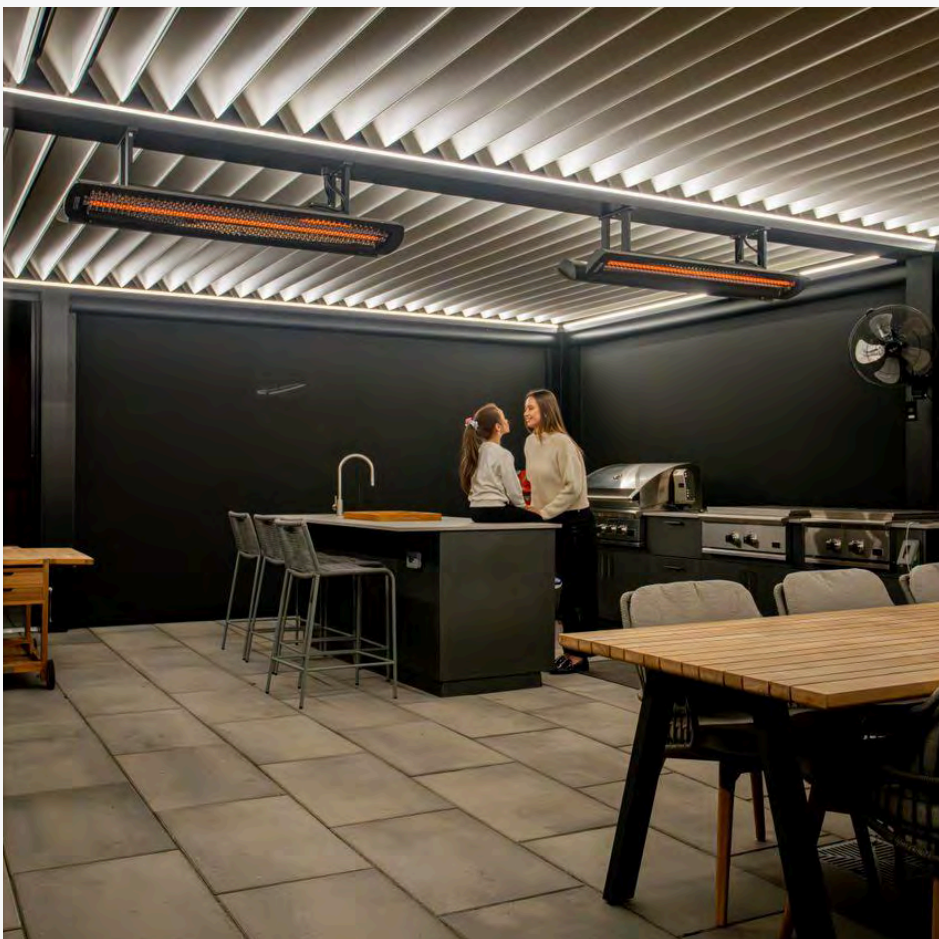
The transceiver that transforms RS232 serial port commands uses a third-party such as the Control4 System's central hub that acts as the brain of your smart home, communicating with all your Control4-compatible devices.

Outdoor Kitchen Cover

20' x 28'



Create an inviting outdoor space with the perfect pergola over an outdoor kitchen that makes it easy to enjoy more time outside. This 20' by 28' pergola completes this outdoor dining experience and easily adjusts sunlight and shade, and perfect for added outdoor heaters transforming the area into an all-season retreat. The added zip screens make prepping and serving meals outside effortless and worry-free, and guests will be comfortable no matter what season you're hosting that get-together.

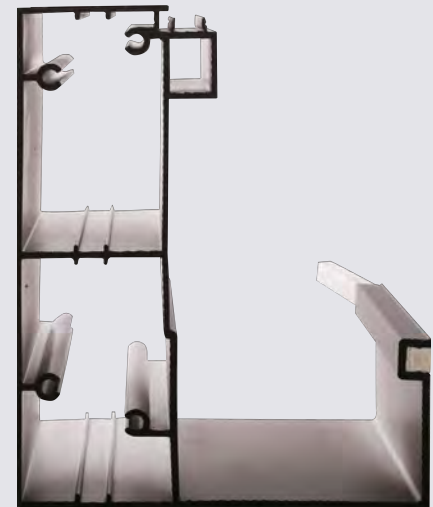


Watertight Roof

Our beam and integrated gutter system offers a durable, efficient, and aesthetically pleasing water drainage solution in our pergola structures, requiring minimal maintenance with its streamlined design.



Gutter System



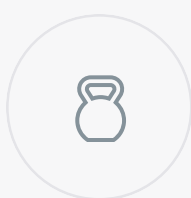
How It Works

By combining structural support and water runoff management into a single component that integrates into any customizable design, makes it suitable for all architectural styles in both residential and commercial applications.



Snow Load

1. Designed to withstand a snow load, our pergolas offer stronger beams, and a durable double layered louver to ensure safety and longevity of the structure.



Up to 65 pounds per square foot

The durable pergola structure ensures stability even under snow, providing comfort and safety all year round.

Bungalow Pergola Project

14' x 25'

Improve the functionality of your outdoor space with a two section custom built pergola attached to the roofline with custom made brackets that elevates the existing architecture, and creates a cozy and inviting space for relaxing and entertaining. Designed for proper water drainage, this pergola offers complete weather protection and lowers energy costs by reducing direct sunlight and heat exposure to any south-facing backyard.



SEE ALL
PHOTOS









Warranty

Our 10 year warranty covers defects in materials and workmanship for the frame, roofing, finishes, and moving parts, but excludes damage from wear and tear or extreme weather events. Check warranty details for specific coverage.



COVERED

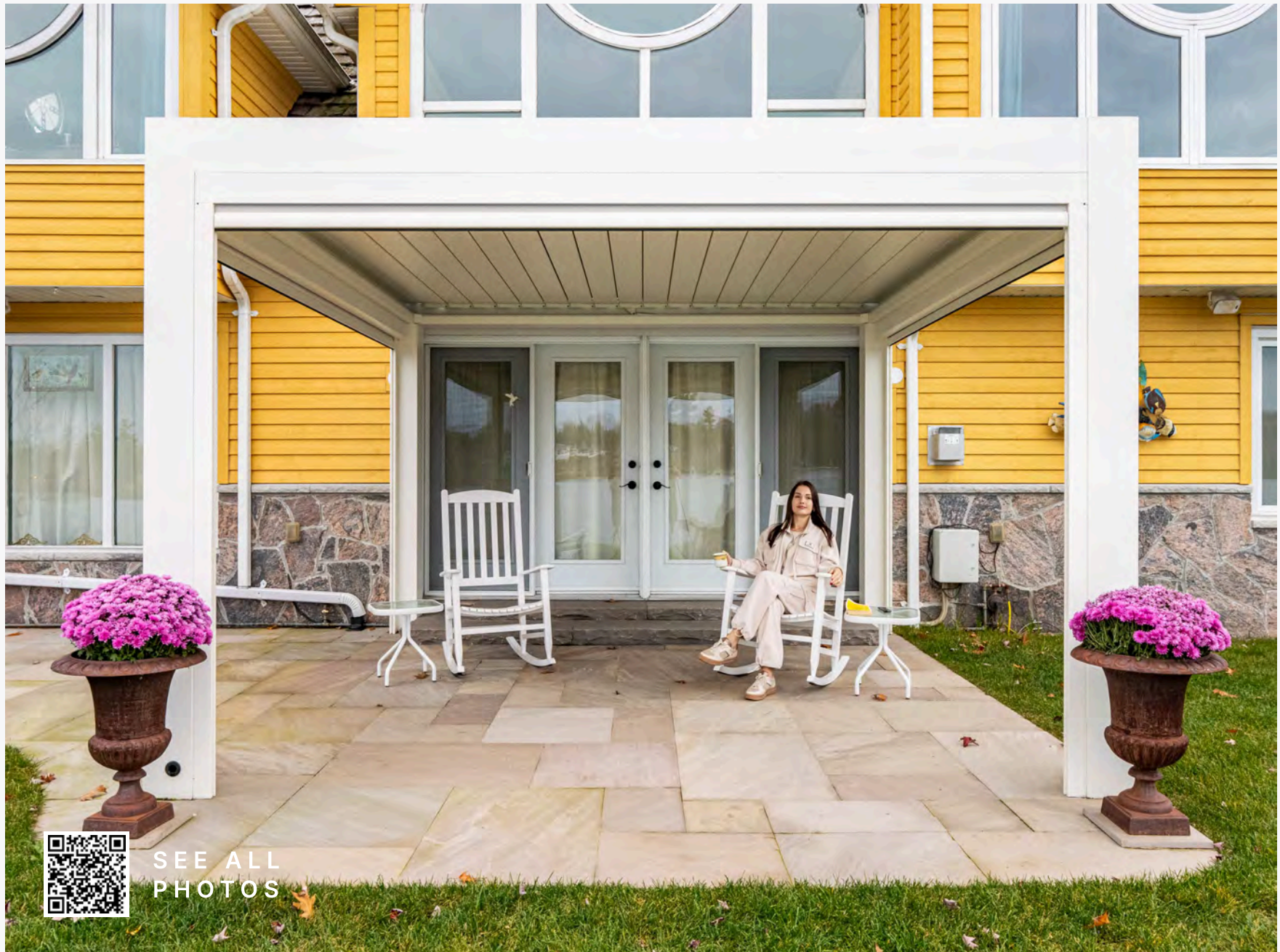
 Aluminum Parts / Extrusions / Structure	 10 years
 Motorization Powered by Somfy	 2 years
 Components (motor, power supply, receiver, and electronic controls)	 2 years



10 Year
Warranty

White Lakeside Retreat

12' x 12'



Where modern elegance meets natural beauty! This 12' by 12' aluminum pergola in white blends seamlessly into the existing colour scheme of this lakefront home to reflect the natural light and offers a durable, weather-resistant design for a clean and neutral finish during the day, and a colourful and dimmable LED light that adds ambiance to the space at night.



Louvers In Existing Frame

Adding our integrated louvered roof and drainage system into an existing structure offers an attractive way to block undesired sun and heat while allowing natural light onto any patio space. Designed with custom homes in mind, an inner frame is incorporated into the design for easier installation and maintenance. Our custom louvered pergola roofs provide a wide range of benefits made from a durable extruded aluminum sturdy enough to withstand any snowload, and a beautiful alternative to a fixed roof by adding an aesthetic appeal to your next home build.





Nature's Outdoor Oasis



When cooler weather approaches, stay comfortable outdoors with our aluminum pergola that features a fireplace and heaters making this the place to be in winter. The 3 section pergola is the perfect blend of style and function, whether you're hosting a group or enjoying the fresh air solo, the best place to be is under a warm and inviting space that adds a custom touch.

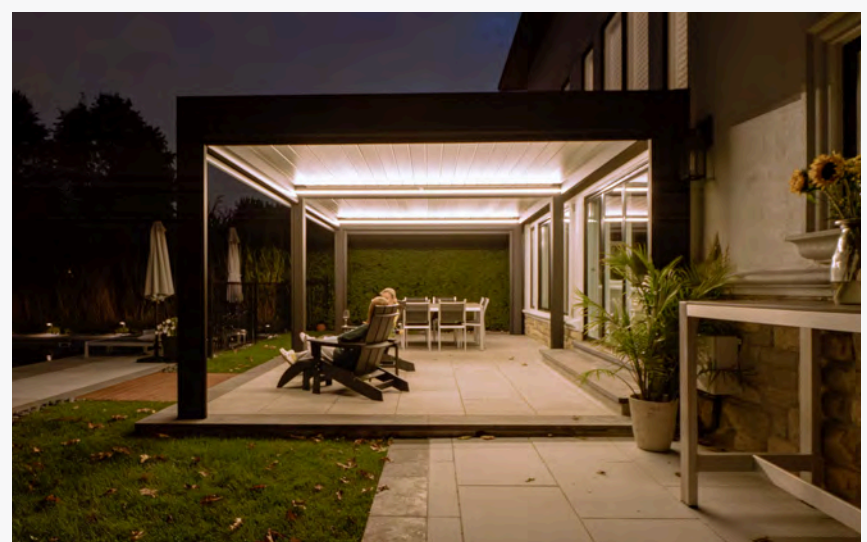




House Extension

14' x 25'

A 14'x25' pergola with a Jet Black structure and Pure White louvers creates a striking contrast against the backdrop of a white home exterior.





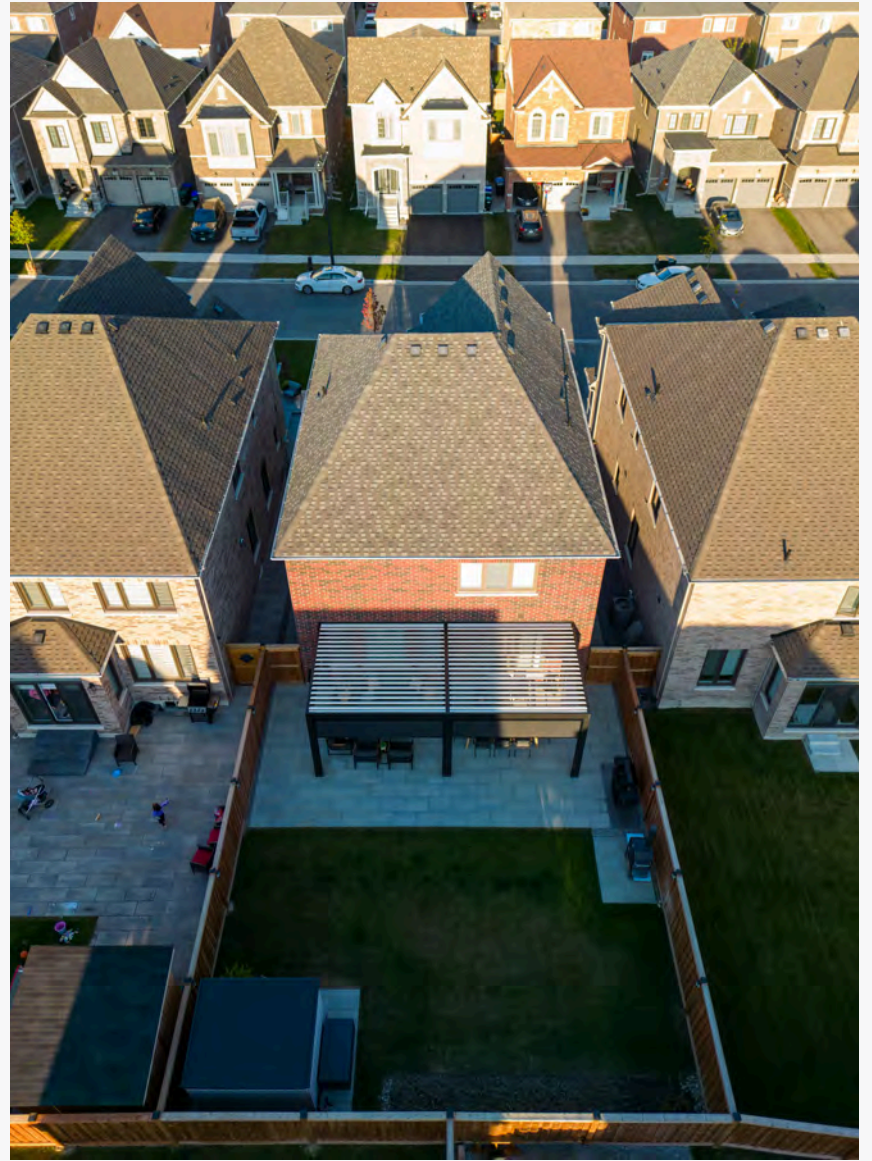
Backyard Complement

12' x 27'



A 12'x27' pergola directly against a home creates a comfortable transition from indoor to outdoor living. Ideal for expanding your living area and accommodating larger social gatherings.





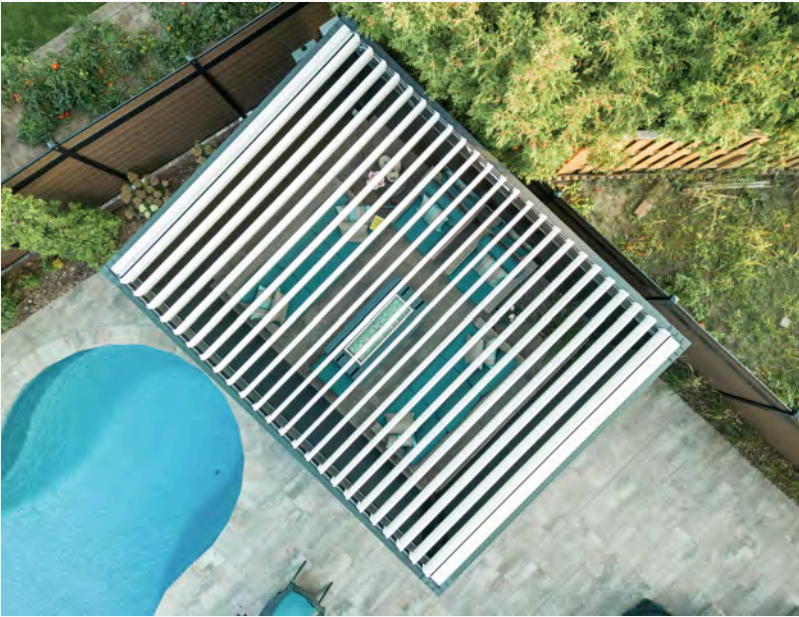
Poolside Serenity

12' x 16'

A pool-side 12'x16' pergola provides shade and comfortability. Two aluminum feature walls further enclose the space enhancing shade and adding privacy. Our aluminum walls offer numerous customization options, including the installation of TV mounts.



SEE ALL
PHOTOS



Cantilevered Outdoor Kitchen

14' x 25'

Featuring our Jet Black colour for both louvers and frames, two distinct pergola styles adorn a single backyard; a 5'x16' cantilever design over an outdoor kitchen and a 14'x18' freestanding pergola covering a sitting area.



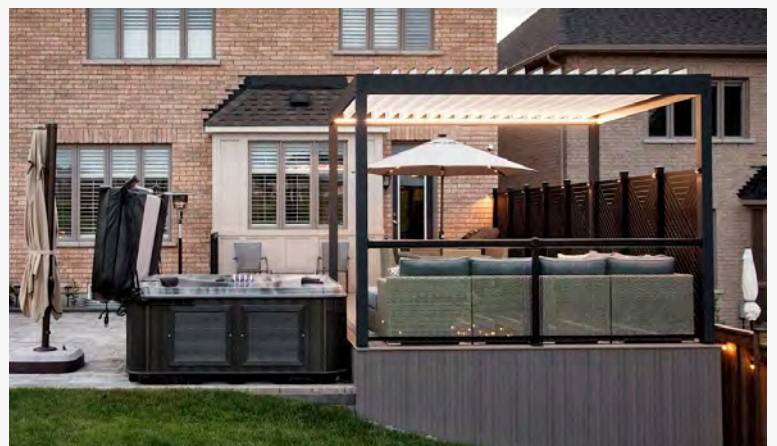
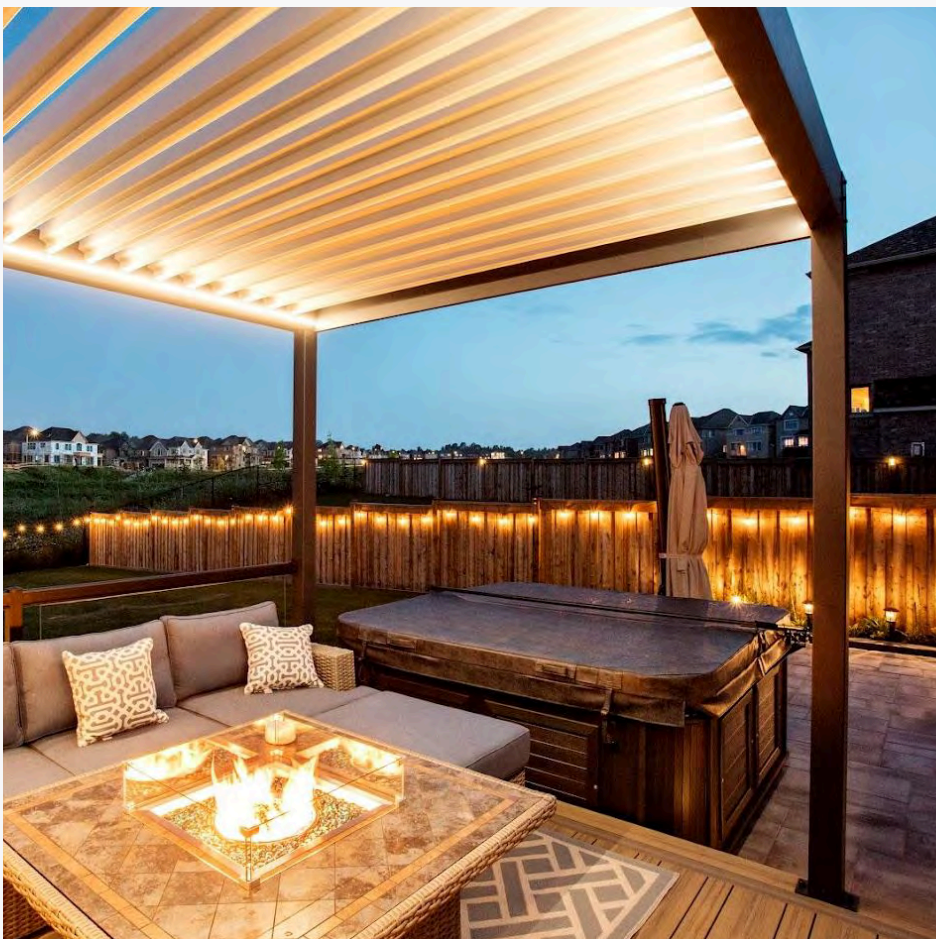


KIT with LED

10' x 12'



Embrace every season with the 10' by 12' KIT, Canada's best adjustable louvered roof pergola designed with every detail in mind. The easy to operate manual louvers and the integrated gutter system for proper water drainage makes this do-it-yourself pergola a best seller that can be installed in 4 hours.



Rooftop Relaxation Station

12' x 14'



A 12'x14' rooftop terrace pergola blends into its urban context. Homeowners can comfortably sit outside under our pergola during the hours where surrounding buildings don't facilitate shade. Zip screens on all sides provide privacy and sun-protection.



Winter Wonderland Swimspace

16' x 25'

Manufactured in Canada, our louvered roof system is reinforced to endure winter conditions.



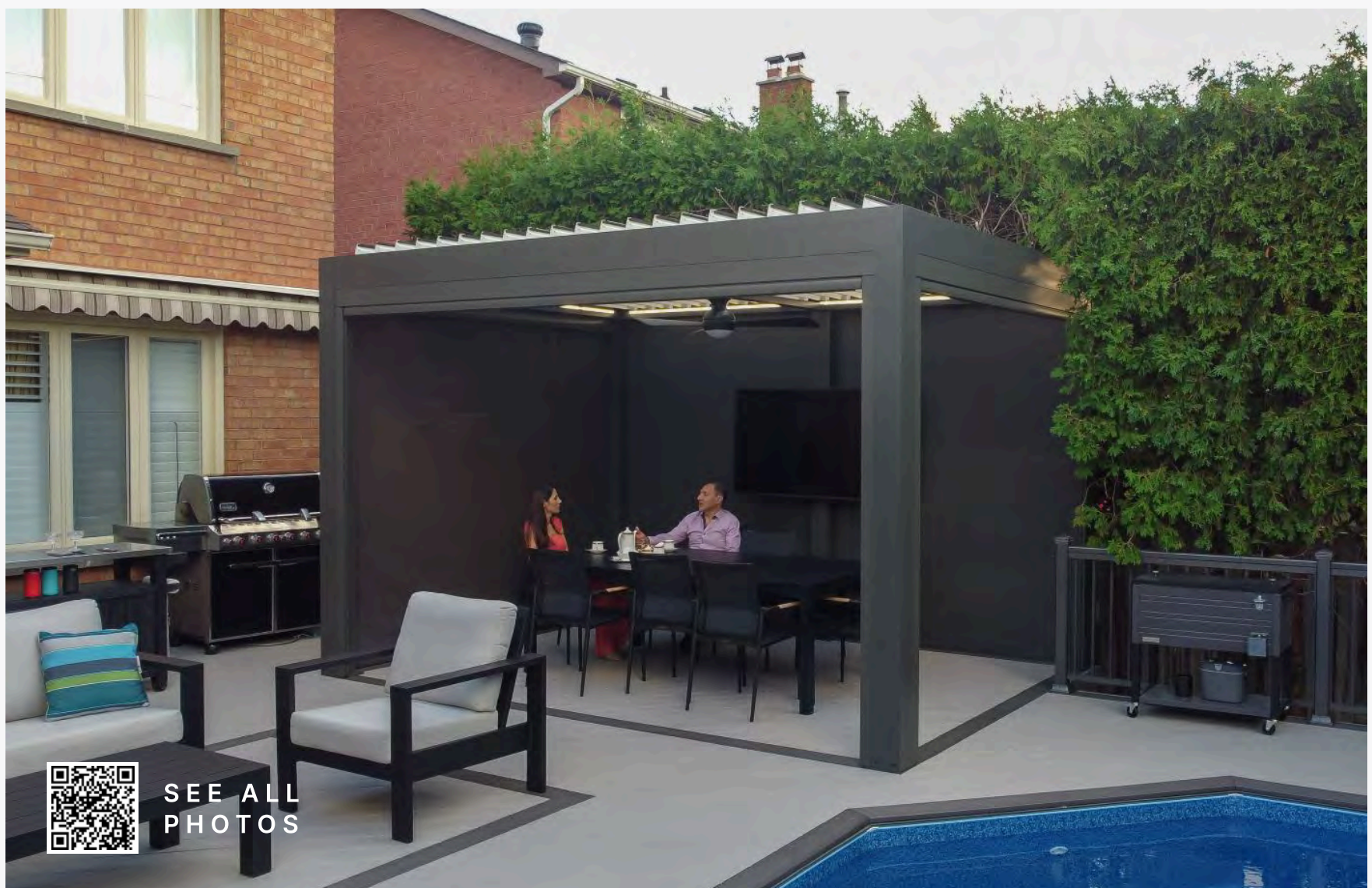
This 16' by 25' accommodates a hot tub and is segmented into two sections, offering additional overhead control. The supplementary zip screens add extra privacy and protection from cold and snow.



Entertainment Escape

12' x 14'

A 12'x14' pergola creates a new comfortable outdoor dining area with LED lights in neutral white, three motorized retractable zip screens, and an aluminum wall that allows for TV integration.

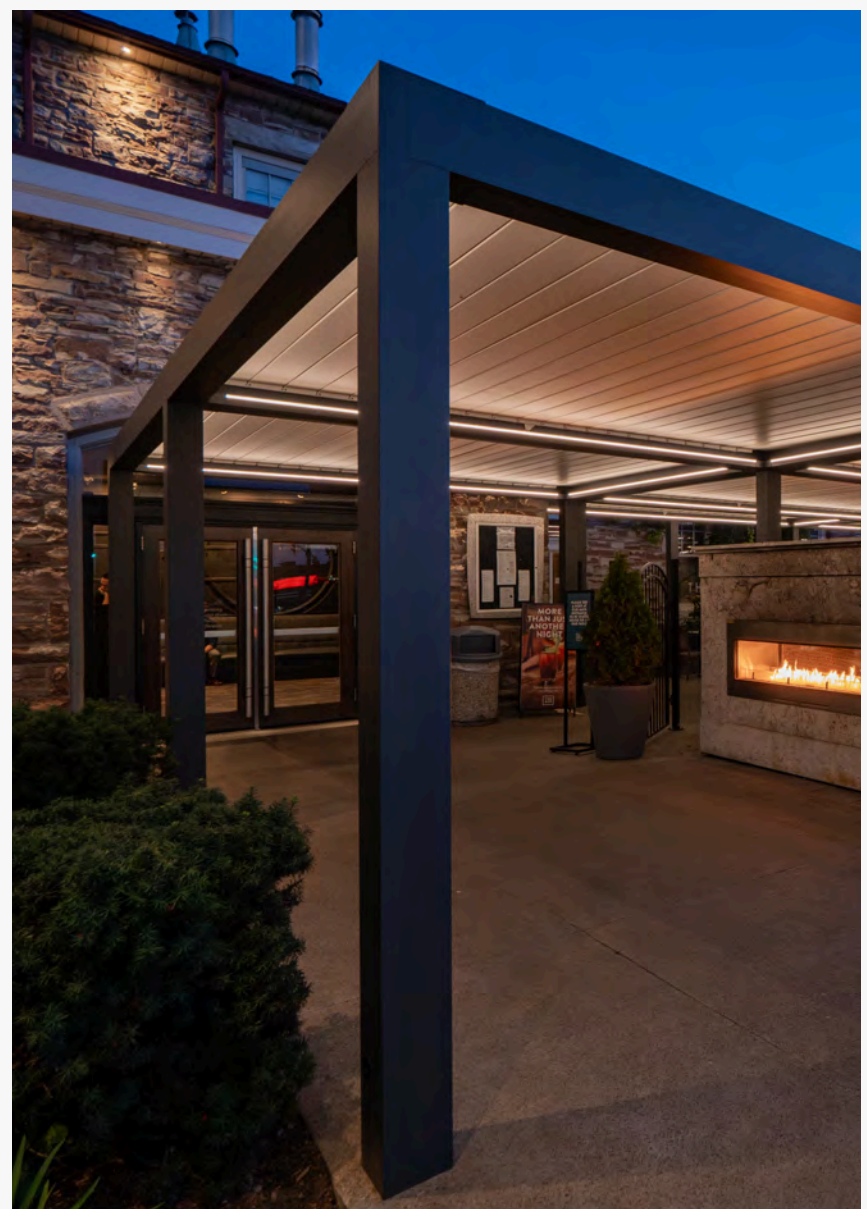


SEE ALL
PHOTOS

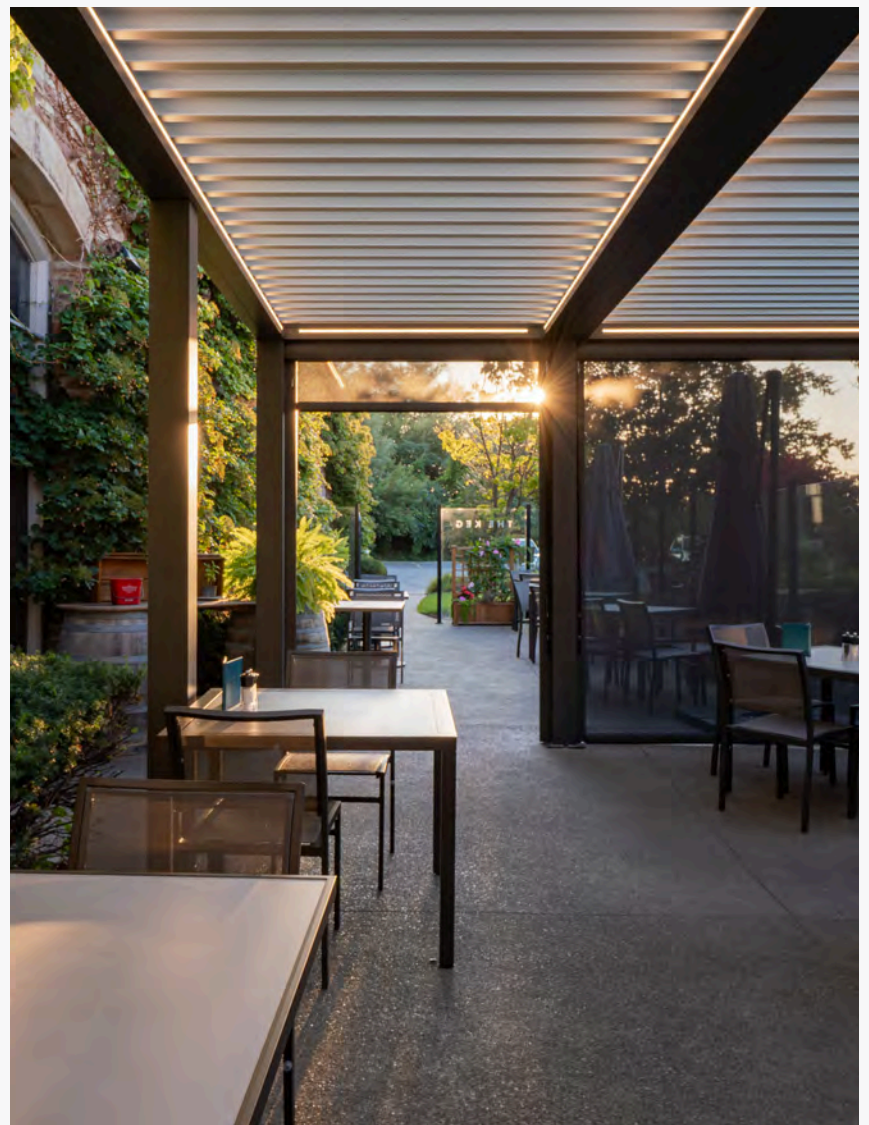


Keg Steakhouse Outdoor Dining Experience

Aluminum Pergola collaborated with the The Keg in St. Catharines, Ontario to elevate and facilitate an outdoor dining experience for both patrons and staff. Our team approached this project with great esteem, particularly considering the site's rich historical background.



Our 1800 square foot pergola adjacent to the iconic building expands The Keg's dining area for an exceptional outdoor culinary affair. The incorporation of built-in LED lighting and zip screens adds to the ambiance, crafting a radiant and cozy patio.

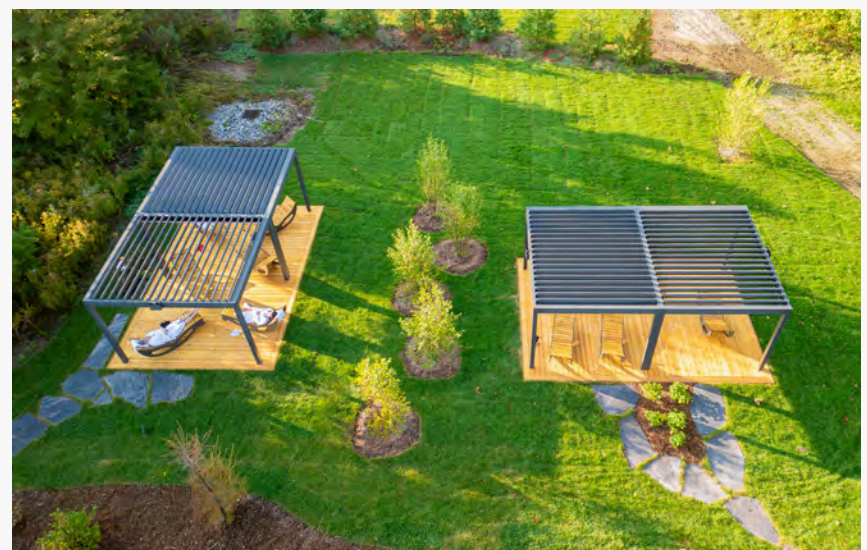


Vettä Nordic Spa Project

12' x 27'



In collaboration with Vettä Nordic Spa nestled in Ontario's Horseshoe Valley, we installed eight aluminum pergolas at this stunning relaxation resort, where guests immerse themselves in the beauty and reconnect with nature. Our pergolas provide shade and shelter, while enhancing in the experience. Aesthetically adding to the natural beauty of the spa setting, our aluminum pergolas not only add to the landscape, but enhance the comfort and ambiance of the resort.





Henry of Pelham Project

Escape to the serenity of Henry of Pelham Family Estate Winery! Our stunning multi-section pergolas with retractable zip screens are the perfect spots to unwind with friends, sip a favourite wine, and take in the breathtaking vineyard views. Comfortable seating with the sounds of nature make this spot a tranquil oasis for shared moments.





Rosewood Winery Project

Nestled amid the stunning natural scenery of the Niagara Escarpment region, our pergola complements the renowned and award-winning vineyard of Rosewood Winery.

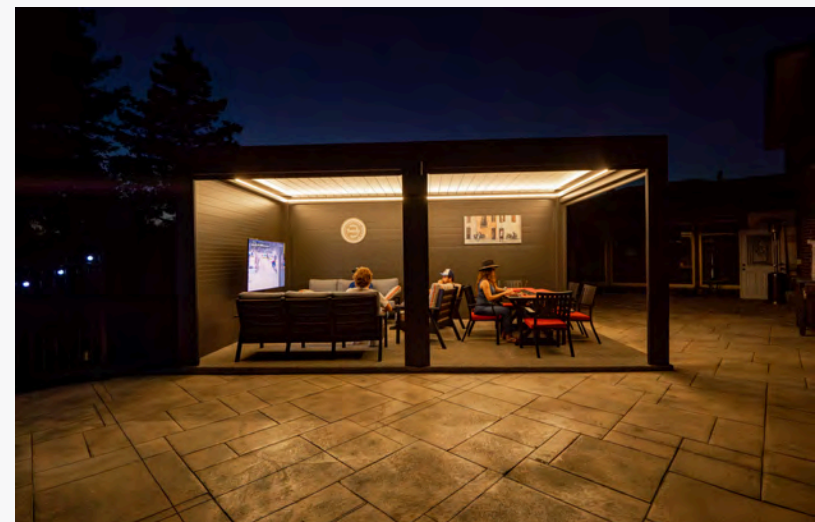
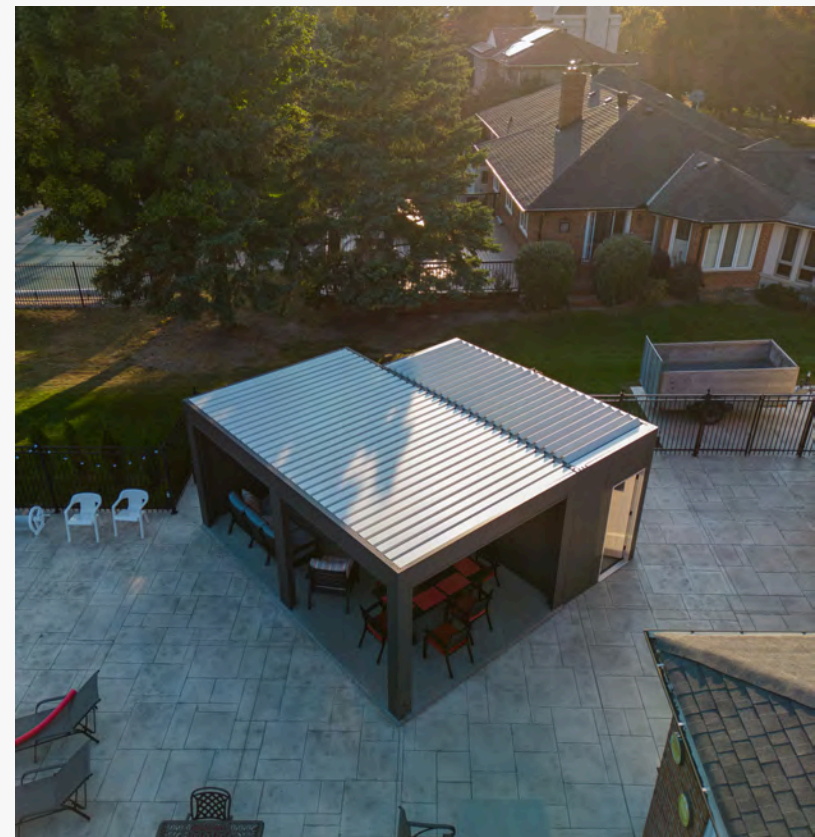


Equipped with motorized louvers and manually operated zip screens, this 20'x30' structure provides a comfortable outdoor seating area for visitors to savor exceptional wines while enjoying idyllic views of the estate.

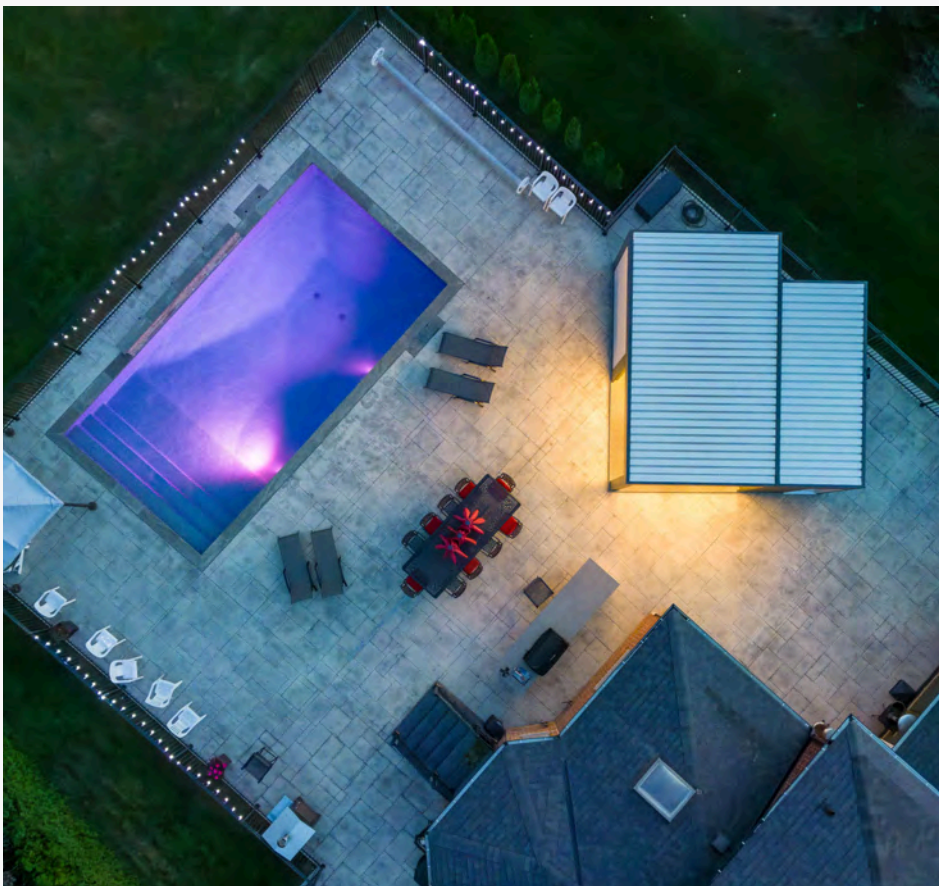


Outdoor Gameroom Pergola

12' x 20'



Decorative and functional, this 7' by 16' aluminum pergola fully covers the pool equipment, and an added 12' by 20' with a sitting area completes this space. Our aluminum pergola is beautifully enclosed with aluminum walls that separates both spaces, and with retractable zip screens and LED lighting the pergola is ready for year-round use. This is a true poolside oasis that is customizable to cover any space for added privacy and visual interest that is individual to your home.

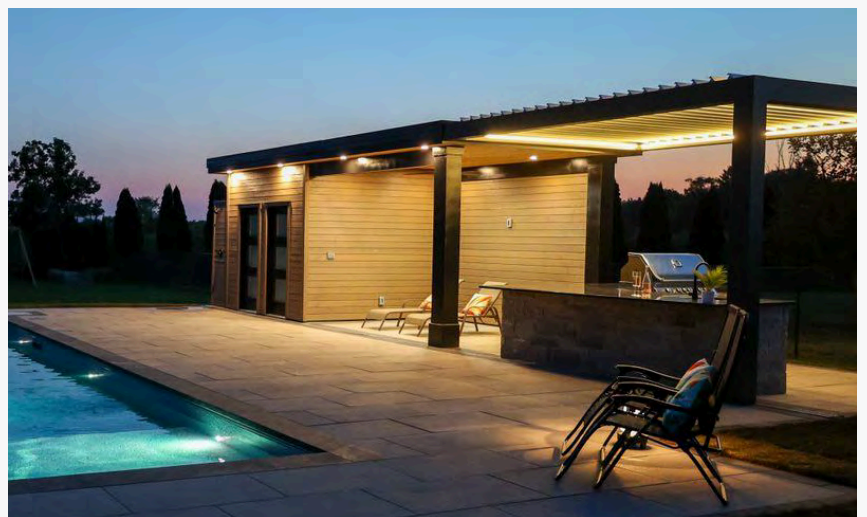
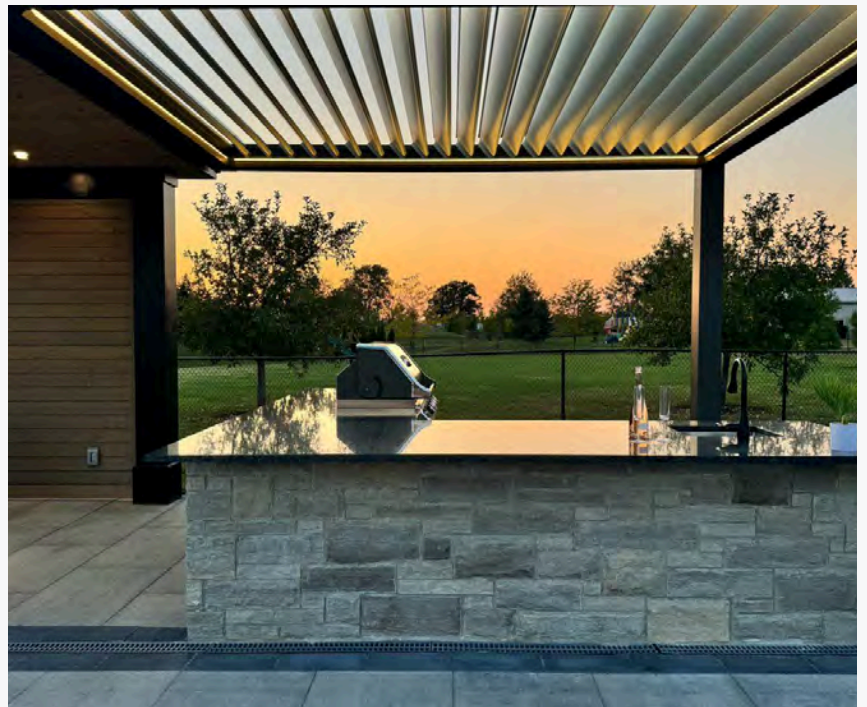


Poolside Pergola + Cabana

10' x 14'

Bring resort-style luxury to your backyard with this elegant aluminum pergola featuring an integrated cabana changing room. Designed for both style and function, this spacious structure offers ample shaded space for lounging and entertaining, and covers 10' by 14' space over an outdoor kitchen area. The enclosed cabana provides a private retreat for changing and a luxurious restroom. Constructed in a sleek, modern finish, it adds a refined architectural touch to any poolside setting making it the centerpiece for upscale outdoor living





L-Shape Pergola Swim Spa

10' x 20'



Turn your backyard into a private luxury oasis with this L-shaped aluminum pergola expertly designed to complement a 10' by 20' swim spa area with a 12' by 14' dedicated lounge area for an enclosed spa retreat. This integrated design separates the sitting area from the private spa zone, creating a seamless flow between relaxation and rejuvenation. Perfect for year-round outdoor use, this pergola also features laser cut privacy screens that transforms the area into a stylish, functional haven of tranquility and modern elegance.







Lousol Corp.

5155 Spectrum Way, Bldg. 28
Mississauga, ON L4W 5A1
Canada

(647) 905-6459

sales@aluminumpergola.ca

www.aluminumpergola.ca